

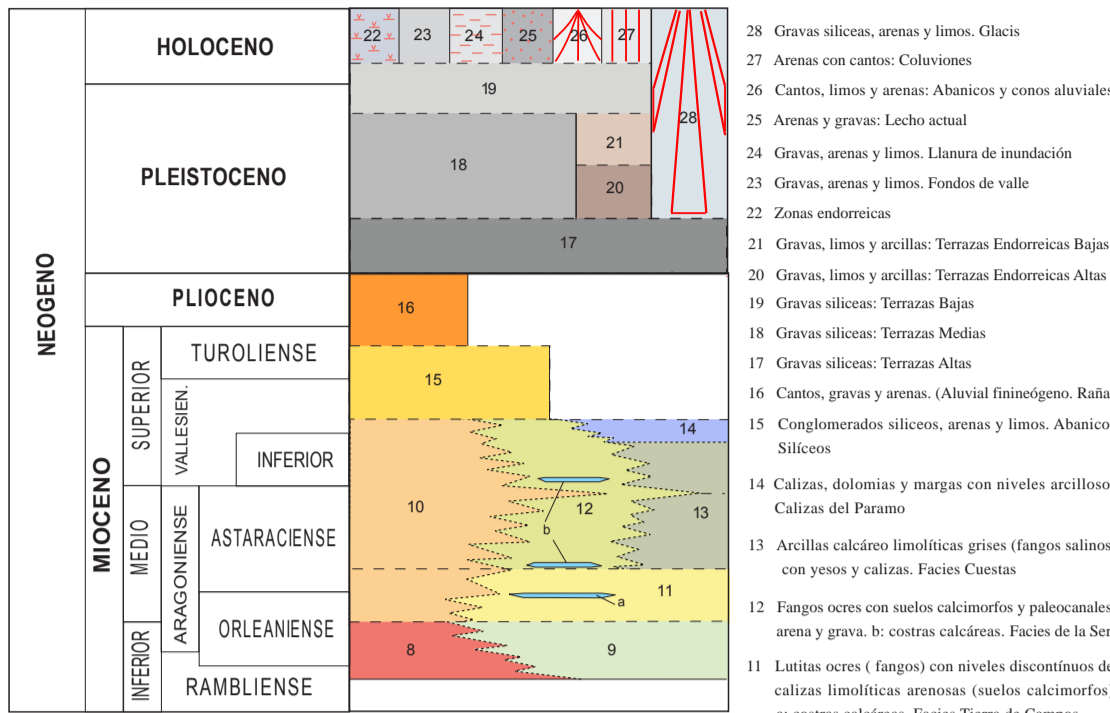
MAPA GEOLÓGICO DE ESPAÑA  
Escala 1:200.000

Instituto Geológico  
y Minero de España

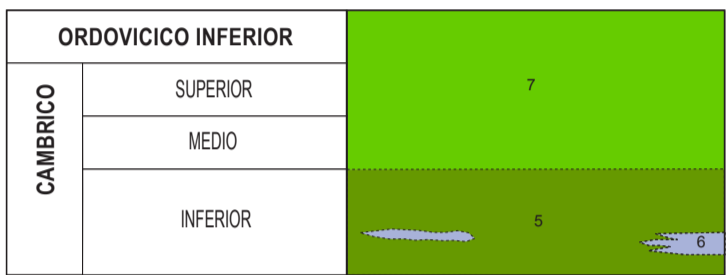
LEÓN

19  
4-3

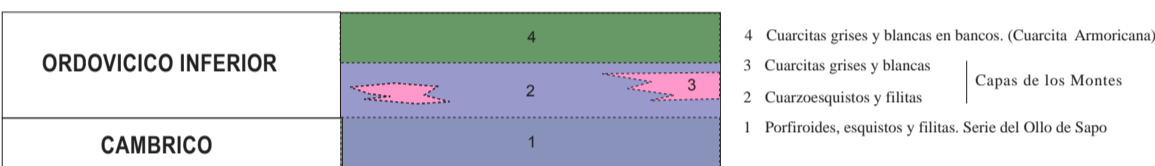
LEYENDA



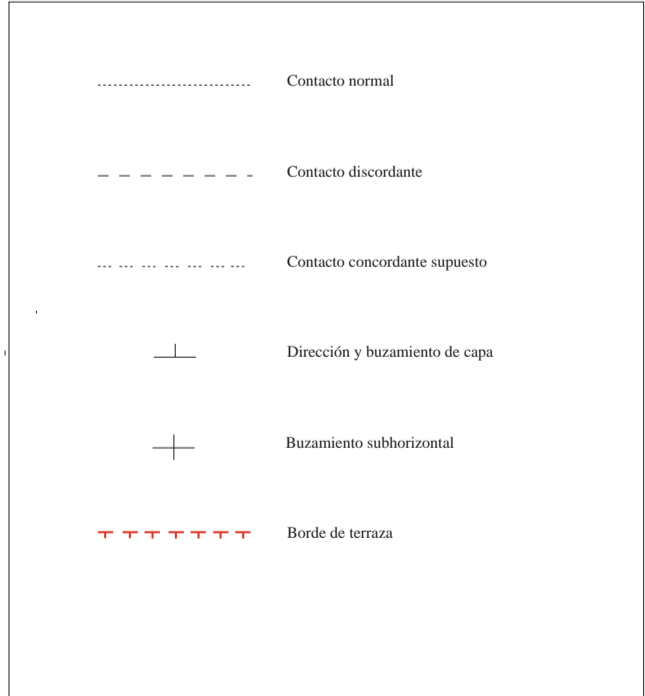
ZONA ASTUROCCIDENTAL LEONESA:  
DOMINIO DEL NAVIA ALTO SIL



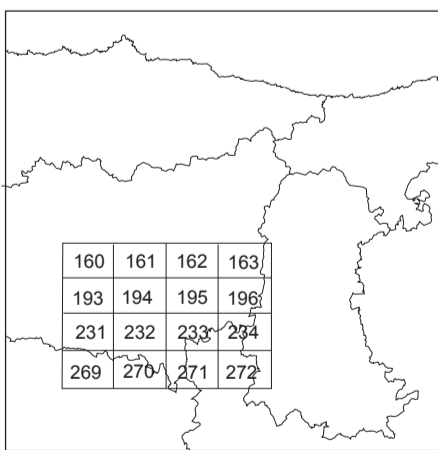
ZONA CENTROIBÉRICA:  
DOMINIO OLLO DE SAPO Y DOMINIO DE TRUCHAS



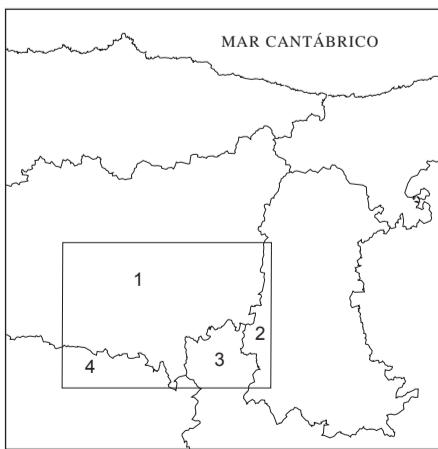
SIGNOS CONVENCIONALES



REFERENCIA MAPA NACIONAL  
1 : 50.000



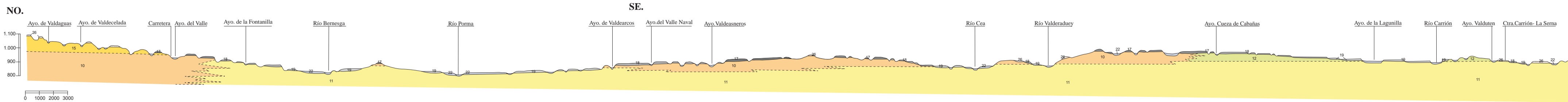
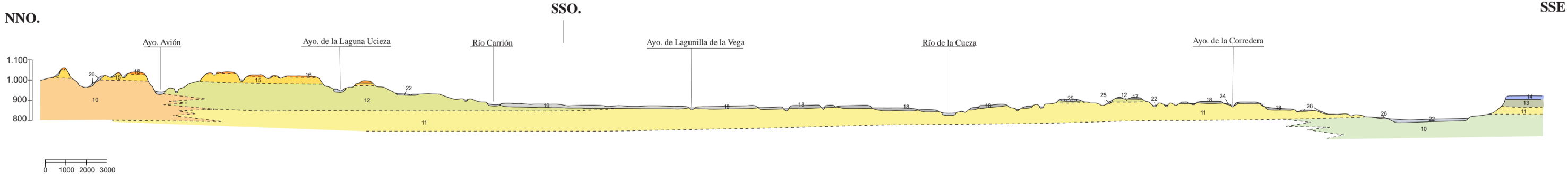
DIVISION ADMINISTRATIVA



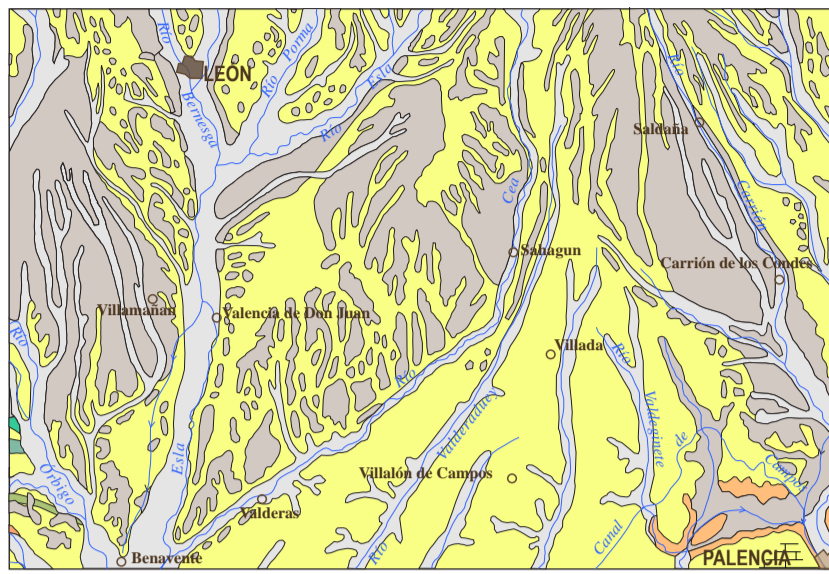
1. León  
2. Palencia  
3. Valladolid  
4. Zamora

CORTES GEOLÓGICOS

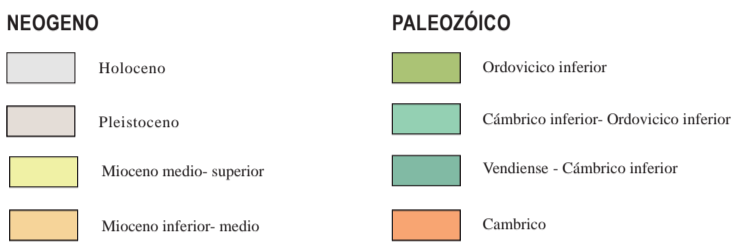
Escala vertical 1 : 10.000  
Escala horizontal 1 : 100.000



ESQUEMA REGIONAL



Escala 1 : 1.000.000



COLUMNAS ESTRATIGRAFICAS EN LAS  
PRINCIPALES UNIDADES O ZONAS

